

YEAR 2009

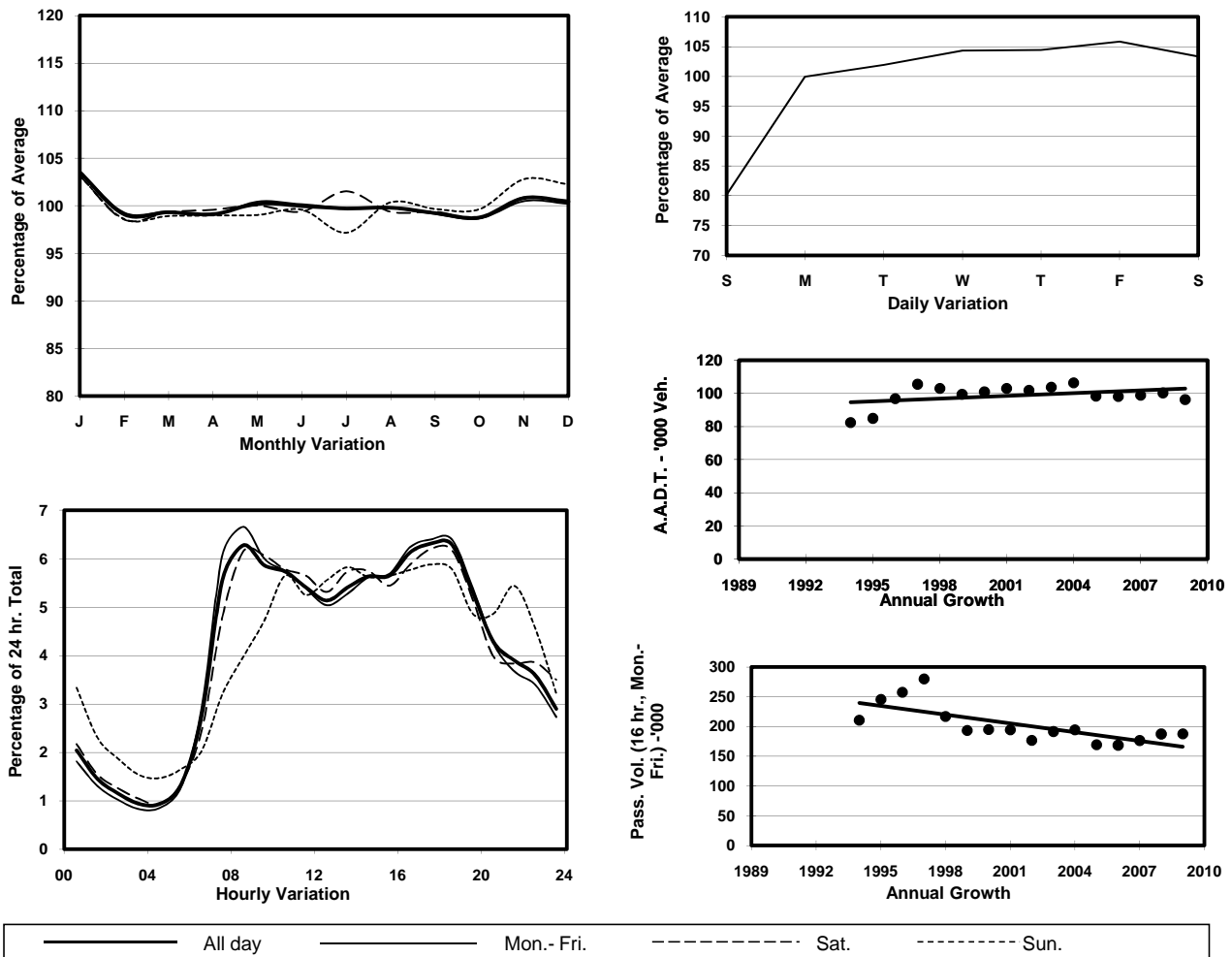
Location

Screenline Y-Y(Boundary between Tuen Mun & Yuen Long)

Stations on Cordon/Screenline

5025 and 6213

1. TRAFFIC FLOW VARIATION AND GROWTH



2. TRAFFIC CHARACTERISTICS (BY DIRECTION)

Parameter	All - Day	Mon. - Fri.	Sat.	Sun.
EAST BOUND				
A.A.D.T.	48370	50660	50300	38630
R 12 / 24 - %	70.6	71.7	69.9	63.8
R 16 / 24 - %	87.2	87.9	86.4	83.4
AM Peak Hour	0800-0900	0800-0900	0800-0900	0900-1000
One-way flow at AM peak hour	3030	3330	3270	1990
T - % (AM)	-	24.2	-	-
PM Peak Hour	1700-1800	1700-1800	1800-1900	1800-1900
One-way flow at PM peak hour	3030	3260	3270	2250
T - % (PM)	-	30.4	-	-
Prop.of commercial vehicles - 16 hr.	-	28	-	-
WEST BOUND				
A.A.D.T.	47850	49780	50280	39380
R 12 / 24 - %	68.3	69.4	67.9	61.9
R 16 / 24 - %	85.8	86.5	85.1	81.8
AM Peak Hour	0800-0900	0800-0900	0900-1000	0900-1000
One-way flow at AM peak hour	3010	3360	2960	1690
T - % (AM)	-	25.4	-	-
PM Peak Hour	1800-1900	1800-1900	1700-1800	1700-1800
One-way flow at PM peak hour	3050	3280	3240	2420
T - % (PM)	-	23.1	-	-
Prop.of commercial vehicles - 16 hr.	-	27.2	-	-

3. OTHER INFORMATION AND COMMENT

4. Vehicle classification and occupancy - Monday to Friday

Time		Class of vehicle									
		Motor	Private	Taxi	Private	PLB	Goods veh.		Non	Fr. Bus	
		Cycle	Car		LB		Light	M & H	Fr. Bus	SD	DD
0700-0800	Pro	1.7	28.6	12.0	0.8	4.1	24.1	19.5	7.8	0.2	1.2
	Ocp	1.0	1.4	1.9	7.9	13.6	1.6	1.1	7.6	8.0	19.1
0800-0900 Peak Hour	Pro	1.4	41.5	7.6	1.4	3.1	20.2	21.0	2.9	0.1	0.8
	Ocp	1.1	1.4	1.9	4.2	14.0	1.4	1.1	12.7	14.4	24.8
0900-1000	Pro	1.4	28.6	7.9	1.5	3.1	26.0	27.7	2.7	0.1	1.0
	Ocp	1.0	1.4	1.6	2.3	10.9	1.5	1.2	4.7	9.0	11.1
1000-1100	Pro	1.3	24.5	9.3	0.7	2.5	27.7	30.3	2.8	0.2	0.8
	Ocp	1.0	1.5	1.6	2.3	9.0	1.5	1.1	10.3	15.2	13.5
1100-1200	Pro	1.2	24.8	6.9	1.8	2.3	30.5	28.7	2.7	0.2	1.0
	Ocp	1.0	1.5	1.7	2.0	9.5	1.4	1.1	10.9	17.2	10.9
1200-1300	Pro	2.2	29.7	8.0	1.7	3.2	25.4	26.7	2.4	0.1	0.7
	Ocp	1.0	1.5	1.6	4.7	8.5	1.6	1.1	10.1	15.9	11.8
1300-1400	Pro	1.4	26.1	7.6	0.9	2.9	28.1	29.8	2.4	0.2	0.8
	Ocp	1.1	1.5	1.7	2.2	9.8	1.6	1.1	10.2	13.3	13.4
1400-1500	Pro	0.9	29.4	6.7	1.0	2.4	29.2	27.4	2.2	0.2	0.7
	Ocp	1.1	1.6	1.6	3.2	12.2	1.5	1.2	14.0	7.0	12.2
1500-1600	Pro	1.4	25.3	9.2	1.3	1.8	31.5	25.9	2.8	0.1	0.8
	Ocp	1.0	1.4	1.7	2.0	9.7	1.4	1.1	9.7	11.0	12.5
1600-1700	Pro	1.7	25.4	11.8	1.7	1.7	23.9	28.0	4.6	0.1	1.0
	Ocp	1.1	1.6	1.6	3.2	12.8	1.5	1.1	8.5	18.3	14.2
1700-1800	Pro	2.0	31.0	8.9	1.2	2.3	24.3	24.7	4.4	0.1	0.9
	Ocp	1.1	1.5	1.7	3.3	12.8	1.5	1.1	10.8	18.0	17.9
1800-1900	Pro	2.5	46.7	8.4	1.0	3.4	17.0	16.2	3.9	0.1	0.8
	Ocp	1.1	1.5	1.6	2.9	15.3	1.5	1.1	9.6	17.0	24.0
1900-2000	Pro	2.5	42.7	10.2	0.5	3.3	18.5	16.1	5.0	0.1	1.0
	Ocp	1.1	1.5	1.7	1.9	9.6	1.5	1.1	6.9	13.9	13.7
2000-2100	Pro	2.1	50.3	10.7	0.6	3.2	13.0	14.1	4.9	0.1	1.0
	Ocp	1.1	1.5	1.7	1.3	12.6	1.3	1.0	7.1	14.6	10.3
2100-2200	Pro	2.1	52.4	12.7	0.5	4.1	11.7	12.5	2.2	0.2	1.6
	Ocp	1.1	1.5	1.8	2.2	11.5	1.5	1.0	9.3	11.3	9.9
2200-2300	Pro	1.7	53.2	18.4	0.5	3.5	11.7	6.8	2.4	0.2	1.6
	Ocp	1.1	1.5	1.6	3.1	13.6	1.3	1.0	4.9	7.6	10.4
16 hours	Pro	1.7	34.0	9.5	1.1	2.9	23.3	22.9	3.6	0.1	0.9
	Ocp	1.1	1.5	1.7	3.2	11.8	1.5	1.1	9.0	13.0	14.6

Legend

- Pro.** Proportion of vehicles in % (Sum may not add up to 100% due to figure rounding)
- Ocp.** Average occupancy of vehicles
- M & H** Medium and Heavy